

IL1RN Antibody (C-term)
Purified Rabbit Polyclonal Antibody (Pab)
Catalog # AP6503b**Specification**

IL1RN Antibody (C-term) - Product Information

Application	WB, IF, FC,E
Primary Accession	P18510
Reactivity	Human
Host	Rabbit
Clonality	Polyclonal
Isotype	Rabbit IgG
Calculated MW	20055
Antigen Region	147-177

IL1RN Antibody (C-term) - Additional Information**Gene ID** 3557**Other Names**

Interleukin-1 receptor antagonist protein, IL-1RN, IL-1ra, IRAP, ICIL-1RA, IL1 inhibitor, Anakinra, IL1RN, IL1F3, IL1RA

Target/Specificity

This IL1RN antibody is generated from rabbits immunized with a KLH conjugated synthetic peptide between 147-177 amino acids from the C-terminal region of human IL1RN.

Dilution

WB~~1:4000

IF~~1:10~50

FC~~1:10~50

E~~Use at an assay dependent concentration.

Format

Purified polyclonal antibody supplied in PBS with 0.09% (W/V) sodium azide. This antibody is prepared by Saturated Ammonium Sulfate (SAS) precipitation followed by dialysis against PBS.

Storage

Maintain refrigerated at 2-8°C for up to 2 weeks. For long term storage store at -20°C in small aliquots to prevent freeze-thaw cycles.

Precautions

IL1RN Antibody (C-term) is for research use only and not for use in diagnostic or therapeutic procedures.

IL1RN Antibody (C-term) - Protein Information**Name** IL1RN

Synonyms IL1F3, IL1RA

Function Anti-inflammatory antagonist of interleukin-1 family of proinflammatory cytokines such as interleukin-1beta/IL1B and interleukin-1alpha/IL1A. Protects from immune dysregulation and uncontrolled systemic inflammation triggered by IL1 for a range of innate stimulatory agents such as pathogens.

Cellular Location

[Isoform 1]: Secreted [Isoform 3]: Cytoplasm.

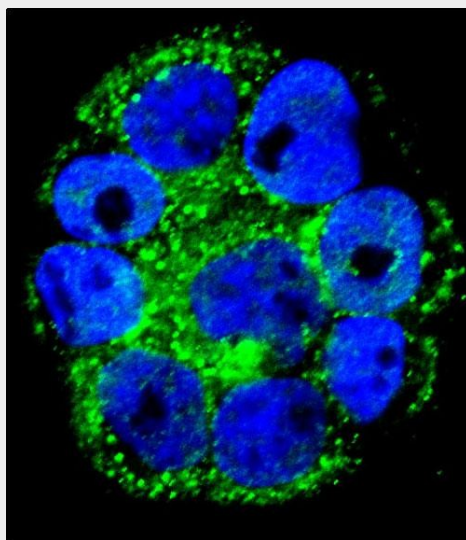
Tissue Location

The intracellular form of IL1RN is predominantly expressed in epithelial cells

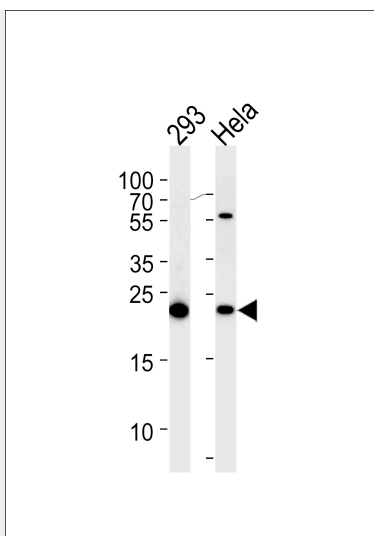
IL1RN Antibody (C-term) - Protocols

Provided below are standard protocols that you may find useful for product applications.

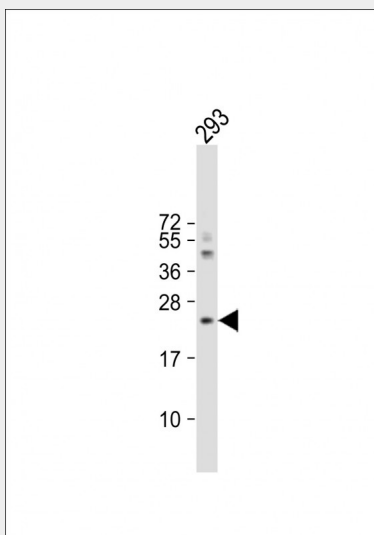
- [Western Blot](#)
- [Blocking Peptides](#)
- [Dot Blot](#)
- [Immunohistochemistry](#)
- [Immunofluorescence](#)
- [Immunoprecipitation](#)
- [Flow Cytometry](#)
- [Cell Culture](#)

IL1RN Antibody (C-term) - Images

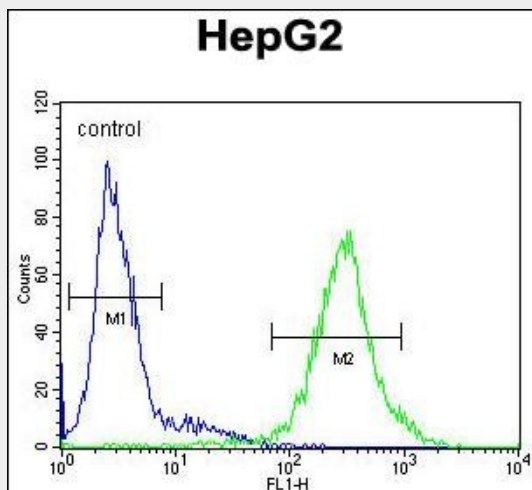
Confocal immunofluorescent analysis of IL1RN Antibody (C-term)(Cat#AP6503b) with WiDr cell followed by Alexa Fluor 488-conjugated goat anti-rabbit IgG (green). DAPI was used to stain the cell nuclear (blue).



IL1RN Antibody (C-term) (Cat.# AP6503b) western blot analysis in 293,HeLa cell line lysates (35ug/lane).This demonstrates the IL1RN antibody detected the IL1RN protein (arrow).



Anti-IL1RN Antibody (C-term) at 1:4000 dilution + 293 whole cell lysate Lysates/proteins at 20 µg per lane. Secondary Goat Anti-Rabbit IgG, (H+L), Peroxidase conjugated at 1/10000 dilution. Predicted band size : 20 kDa Blocking/Dilution buffer: 5% NFDM/TBST.



IL1RN Antibody (C-term) (Cat. #AP6503b) flow cytometric analysis of HepG2 cells (right histogram) compared to a negative control cell (left histogram). FITC-conjugated goat-anti-rabbit secondary antibodies were used for the analysis.

IL1RN Antibody (C-term) - Background

The protein is a member of the interleukin 1 cytokine family. This protein inhibits the activities of interleukin 1, alpha (IL1A) and interleukin 1, beta (IL1B), and modulates a variety of interleukin 1 related immune and inflammatory responses. A polymorphism of its gene is reported to be associated with increased risk of osteoporotic fractures and gastric cancer.

IL1RN Antibody (C-term) - References

Kumar, S., Biochem. Biophys. Res. Commun. 387 (3), 456-460 (2009) Rechcinski, T., Kardiol Pol 67 (6), 601-610 (2009)